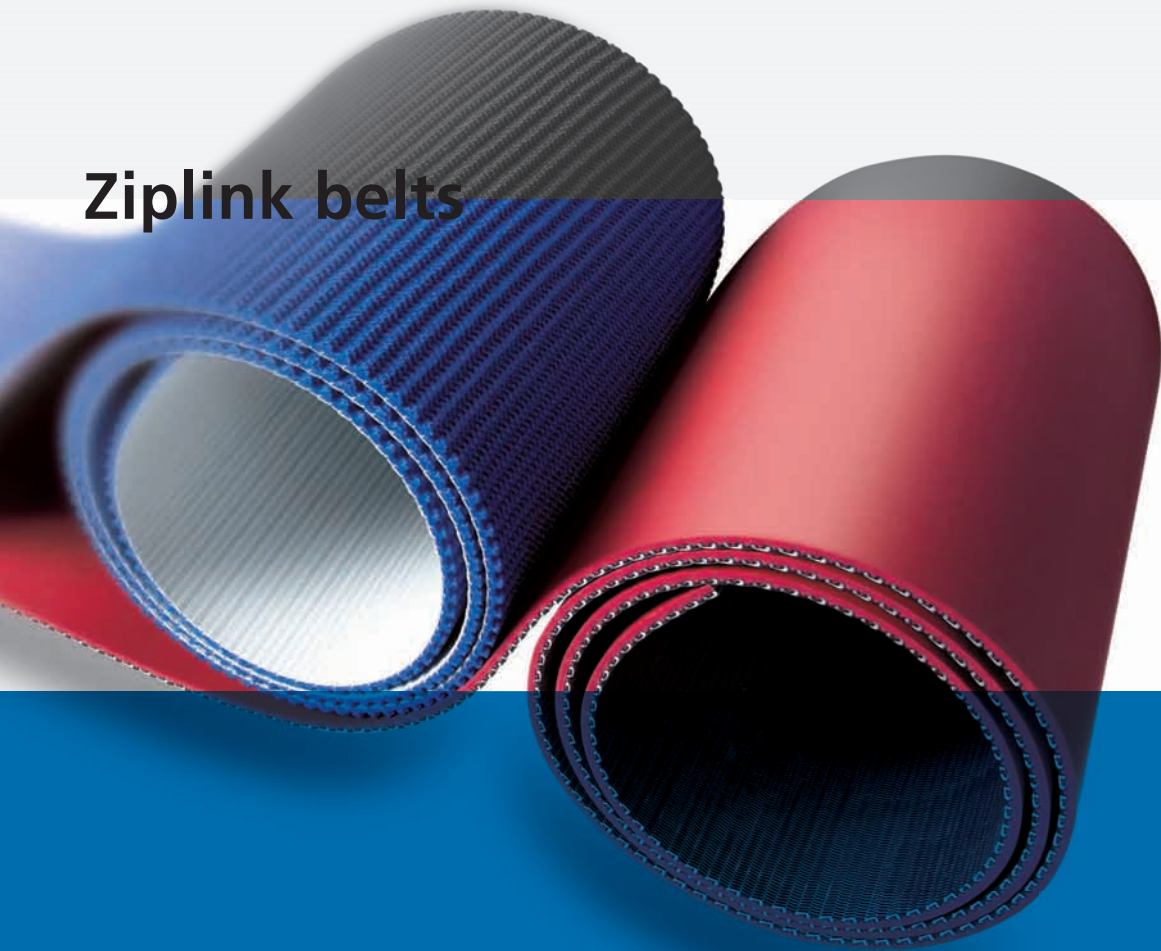


Ziplink belts



- Easy splicing
- Easy to replace & repair
- Minimize downtime

ZipLink



Quality belts that join seamlessly

ZipLink is an innovative belt range

which is specially designed to offer users an outstanding range of product benefits in a variety of different industries. It can be installed or replaced quickly and simply, helping to lower costs and reduce downtime. It also has a more flexible design which allows for the repair or replacement of just small sections of the belt. ZipLink keeps the same resistance over the entire length of the belt leading to much smoother operation. It can protect both the product and the conveyor itself from being damaged. While the safe temperature operating range has been extended from -54°C right up to +176°C.

ZipLink main product benefits

ZipLink has been specifically engineered to make installation, usage and maintenance as straightforward as possible. It can be quickly and easily spliced without the need for any special tools or presses. There is no loss of strength in the splice area and it has a very low stretch polyester monofilament carcass. What's more, the extra high lateral stability makes tracking considerably easier. ZipLink is troughable and the wide selection of top covers available means it can provide solutions for an extensive range of applications.

A variety of applications

It's ideal for cardboard manufacture - box folding, stacking and conveying. Wood processing: grinding, sanding, polishing, braking, sawing, painting and pre-compressing. It can be used for the grinding and sanding of metal, for scanning, check-in, collecting and aircraft loading for airport applications, as well as for the conditioning, weighing and conveying of tobacco. ZipLink is also an excellent choice for metal detectors, panel board and in the agricultural industry.

A range of top covers

Finally, ZipLink gives you a choice of top cover materials. These include oil and grease resistant Nitrile rubber for use in high temperatures. Abrasion resistant Nitrile carboxylated BX. Natural rubber to withstand high levels of friction. UV and wear resistant SBR. Anti-adhesive silicone for use in both low and high temperature. Anti-adhesive Peflex which is oil resistant, food grade and can be used at low temperature. Low cost Flexam. Oil and grease resistant, food grade Nonex. High friction Pletex and abrasion, oil and grease resistant Elastoflex. Cotton fabric for sticky applications.





Select your specific belt

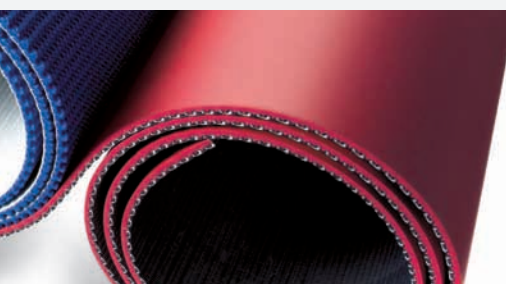
Ziplink Belts

Article No.	Nomenclature							Thickness [mm]	Hardness topcover [shore]	Min. pulley diameter flexing/backflexing [mm]	Temperature range [°C]	
560028	Peflex	EZP	10/1	0	+	03	tan	CR FG	2.40	85A	50/125	-51 to 83
560030	Silam	EZP	10/1	01	+	10	white	CR FG HR	3.30	63A	75/125	-54 to 176
560110	Nitrile BX	EZP	10/1	01	+	C37X	(NI) blue		6.30	70A	75/120	-18 to 121
560111	NR	EZP	10/1	01	+	C37	natural	CR	6.30	40A	75/100	-40 to 121
560116	NR	EZP	10/1	01	+	C52	tan	CR	7.20	45A	100/175	-40 to 121
560119	Nitrile	EZP	10/1	01	+	08	white	CR FG HR	3.40	60A	75/100	-18 to 121
560120	Nitrile BX	EZP	10/1	01	+	05	blue	FG	2.60	70A	50/75	-18 to 121
560121	Nitrile	EZP	10/1	01	+	C37	brown		6.30	50A	75/125	-18 to 121
560122	NR	EZP	10/1	01	+	32	red		5.10	40A	100/125	-40 to 121
560124	Nitrile	EZP	10/1	01	+	C57	white	FG	4.00	60A	75/100	-18 to 121
560127	SBR	EZP	10/1	0	+	C37	black		6.30	45A	75/100	-40 to 121
560129	SBR	EZP	10/1	01	+	C37	black	CR	6.30	45A	75/110	-40 to 121
560136	Nitrile BX	EZP	10/1	0	+	C37X	(NI) blue		6.20	70A	75/120	-18 to 121
583010	Flexam	EZP	10/1	0	+	10	black	M2 FR	3.50	80A	50/80	-15 to 80
583020	Nonex	EZP	10/1	0	+	10	white	FG	3.50	65A	50/80	-15 to 80
583030	Flexam	EZP	10/1	0	+	A79	grey		7.50	55A	100/150	-15 to 80
514615	Pletex	EZP	10/1	0	+	30	red		6.00	35A	60/80	-15 to 80
583040	Fabric	EXP/C	10/2	0	+	0	white	FG	3.90		80/80	-15 to 90
514749	Elastoflex	EZP	10/1	0	+	A19	beige		9.00	65A	100/120	-15 to 80
514616	Elastoflex	EZP	10/1	0	+	P6	beige		8.00	65A	100/120	-15 to 80

Additional:
 FG = food grade
 CR = cold resitant
 HR = high temperature resistant
 FR = flame retardant according ISO 340

Nomenclature
 Nitrile BX EZP 10/1 0+01 D.Green AS

Coating cover Additional
 Fabric Colour
 F/E at 1% Top cover
 Number of plies Bottom cover



ZipLink is a breakthrough in belting design that combines various cover materials with a structured spiral link mesh that can be easily spliced at any length into a continuous belt without the need for special tools, presses or other equipment.

The ZipLink construction eliminates points of weakness because there is no loss of strength in the splice area, making the belts stronger so they last longer than belts of other seamed or fused materials.

ZipLink was developed because many of our customers were looking for a belting substrate that provided long life and flexibility for multiple applications and that they could change easily and quickly without accruing significant downtime or expensive overtime. It's common for ZipLink users to reduce the time and personnel required to change belts by more than half after converting to ZipLink.

Main Ziplink advantages:

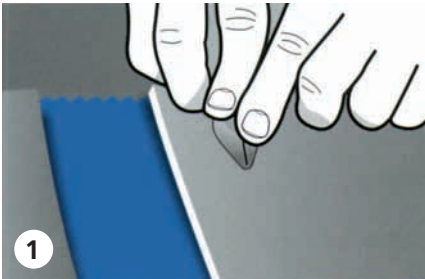
- **Quick belt replacement**
- **Less downtime**
- **Less product damage**
- **Low stretch**
- **Possible repair of damaged belt sections**
- **Safe on-site installation (no heavy equipment needed)**
- **Ideal for difficult locations**
- **Many possible executions**
- **Long lifetime of belts**



Complete tool box including instruction CD available.



Working instruction



Score the back and lubricate the pin.



Pop the pin out at 1.5 cm from the edge.



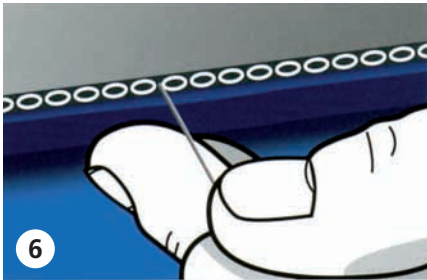
Gently pull the pin out using pliers.



Carefully cut the top cover.



Press the ends back together firmly.



Pass the wire through and cut the excess.



Easy replacement of small sections in the event of damage

Your global contact

International Head Office:

Ammeraal Beltech Holding B.V.
Handelsstraat 1
P.O. Box 38
1700 AA Heerhugowaard
The Netherlands

T +31 72 5751212
F +31 72 5716455
info@ammeraalbeltech.com
www.ammeraalbeltech.com

Austria
T +43 1 2929372
F +43 1 2928906
info@ammeraalbeltech.at

Belgium
T +32 2 466 0300
F +32 2 466 4272
salesgb@ammeraal-beltech.be

Brazil
T +55 11 4655 1244
F +55 11 4655 10 99
vendas@ammeraalbeltech.com.br

Canada
T +1 905 890 1311
F +1 905 890 3660
info@ammeraalbeltech.ca

Chile
T +56 266 96975
F +56 266 96709
info@ammeraalbeltech.cl

China
T +86 21 6534 4690
F +86 21 6548 0430
webmaster@ammeraalbeltech.com.cn

Czech Republic
T +420 56 7330 056
F +420 56 7330 637
prodej@ammeraalbeltech.cz

Finland
T +358 3 278 4400
F +358 3 273 1400
timo.hypponen@ammeraalbeltech.fi

France
T +33 3 20 90 36 00
F +33 3 20 32 29 17
client@ammeraalbeltech.fr

Germany
T +49 4152 937-0
F +49 4152 77695
sales@ammeraal-beltech.de

Italy
T +39 051 660 60 06
F +39 051 660 60 16
info@ammeraalbeltech.it

Luxembourg
T +352 26 48 38 56
F +352 26 48 38 57
sales@ammeraal-beltech.lu

Malaysia
T +60 3 806 188 49
F +60 3 806 189 35
sales.kl@ammeraalbeltech.com.my

Netherlands
T +31 72 57 51212
F +31 72 57 43364
info@ammeraalbeltech.nl

Portugal
T +351 22 947 94 40
F +351 22 941 30 81
geral@ammeraalbeltech.pt

Singapore
T +65 62739767
F +65 62735490
sales@ammeraalbeltech.com.sg

Slovakia
T +421 2 55648541-2
F +421 2 55648543
predaj@ammeraalbeltech.sk

South Korea
T +82 31 448 3613-7
F +82 31 448 3618
arnel@ammeraalbeltech.co.kr

Spain
T +34 93 718 3305
F +34 93 718 6273
ventas@ammeraalbeltech.es

Sweden
T +46 44 43015
F +46 44 43349
info@ammeraal-beltech.se

Switzerland
T +41 55 2253 535
F +41 55 2253 636
verkauf.schweiz@ammeraal-beltech.ch

Thailand
T +66 2 902 2604-13
F +66 2 902 0422
sales@ammeraalbeltech.th.com

United Kingdom
T +44 1992 500550
F +44 1992 553010
sales@ammeraalbeltech.co.uk

United States
T +1 847 673 6720
F +1 847 673 6373
info@ammeraalbeltechusa.com